

# Valve Boxes

## RECESSED

KRVB



## SURFACE MOUNTED

KSMB



### KRVB & KSMB

Valve Boxes can have louvers, peepholes or glass panels. Boxes can be drilled or punched for pipes or conduits of all sizes.

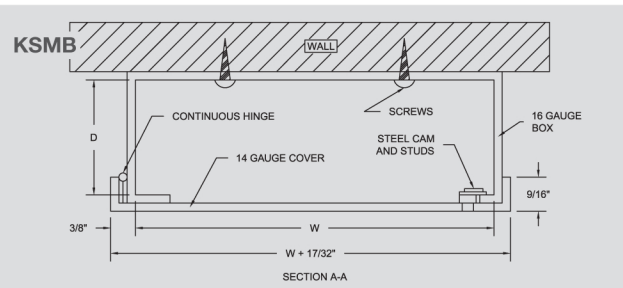
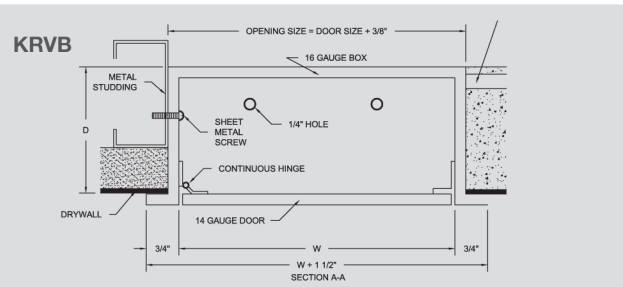
**MATERIAL** Box: 16 ga. steel / Door: 14 ga. steel

**HINGE TYPE** Continuous piano hinge;  
KVRB: Concealed; KSMB: Exposed

**LATCH TYPE** Flush to finished surface; Screwdriver operated with stainless steel cam and studs or cylinder lock with automatic dust shutter

**FINISH** Prime coat of rust inhibitive electrostatic powder, painted white

**NOTES** KRVB Trim: 3/4" arc-welded and ground smooth; 1/4" holes provided for anchoring to wall; Only manufactured to custom specs



### DID YOU KNOW?

Karp Access Doors provide vital access with security, safety and aesthetic appeal. Around the world, Karp doors are the brand of choice for architects, designers, and builders.